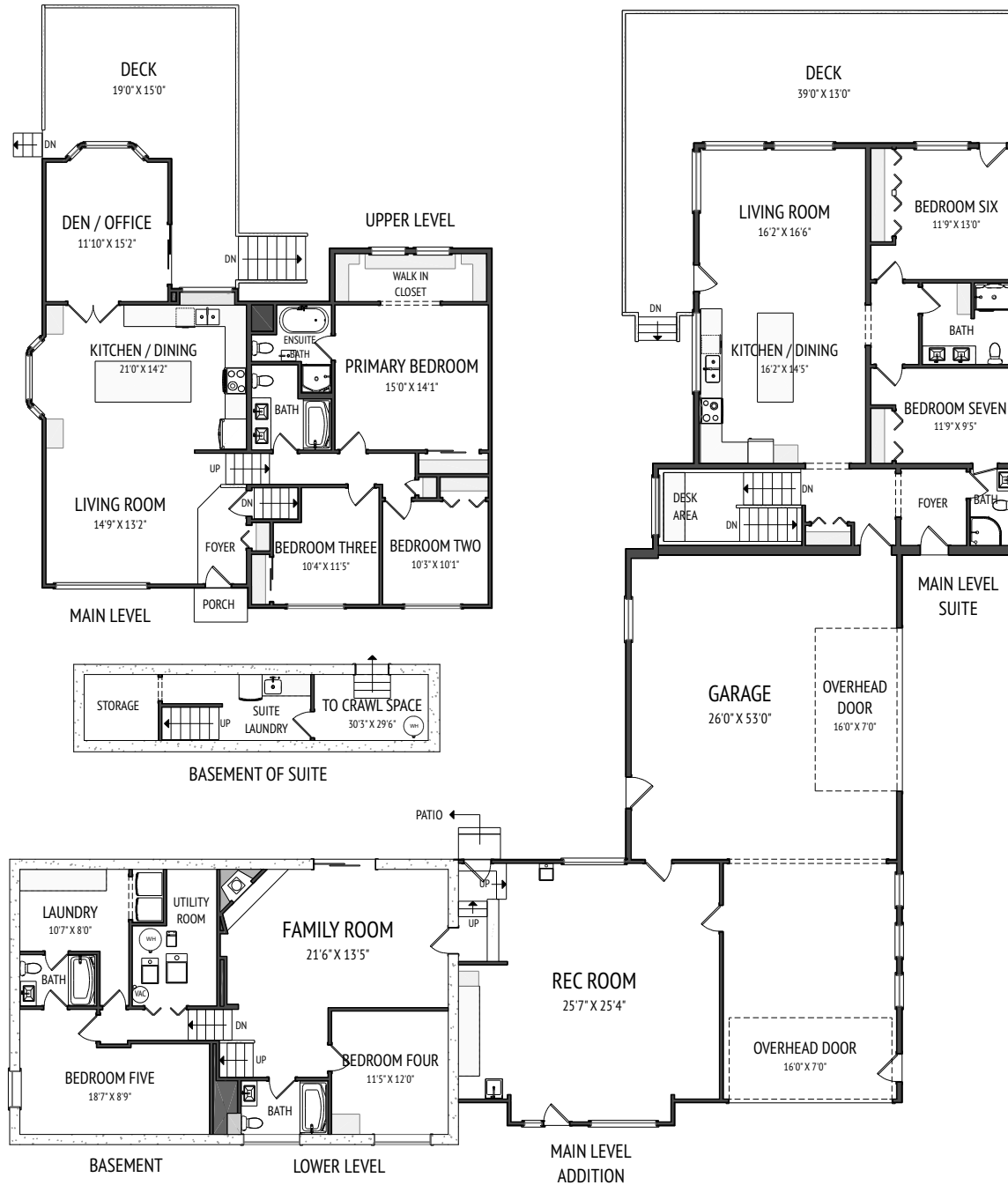


117 HILL SPRING MEADOW, ROCKY VIEW COUNTY, AB

MAIN - 776.24 Sq.ft. / 72.11 m2
ADDITION MAIN - 652.20 Sq.ft. / 60.58 m2
SUITE MAIN - 1321.16 Sq.ft. / 122.74 m2
UPPER - 781.87 Sq.ft. / 72.64 m2
RMS TOTAL - 3531.47 Sq.ft. / 328.07 m2
LOWER - 665.29 Sq.ft. / 61.81 m2
BASEMENT - 566.59 Sq.ft. / 52.63 m2
*DEVELOPED AREA - 513.95 Sq.ft. / 47.74 m2
SUITE BASEMENT - 260.68 Sq.ft. / 24.22 m2
*DEVELOPED AREA - 188.56 Sq.ft. / 17.52 m2
TOTAL W/ BELOW GRADE - 5024.03 Sq.ft. / 466.73 m2
TOTAL DEVELOPED AREA - 4899.27 Sq.ft. / 455.14 m2

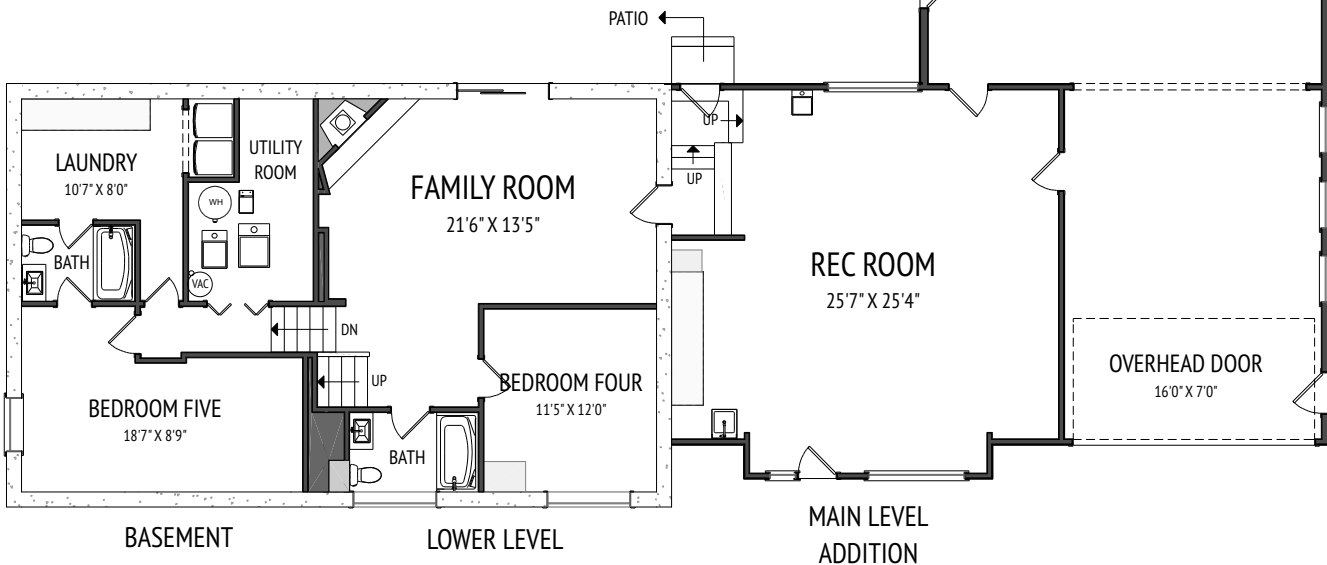
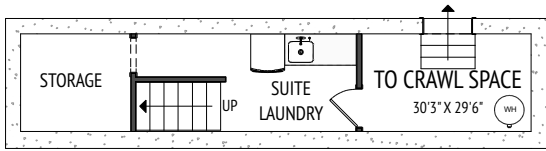
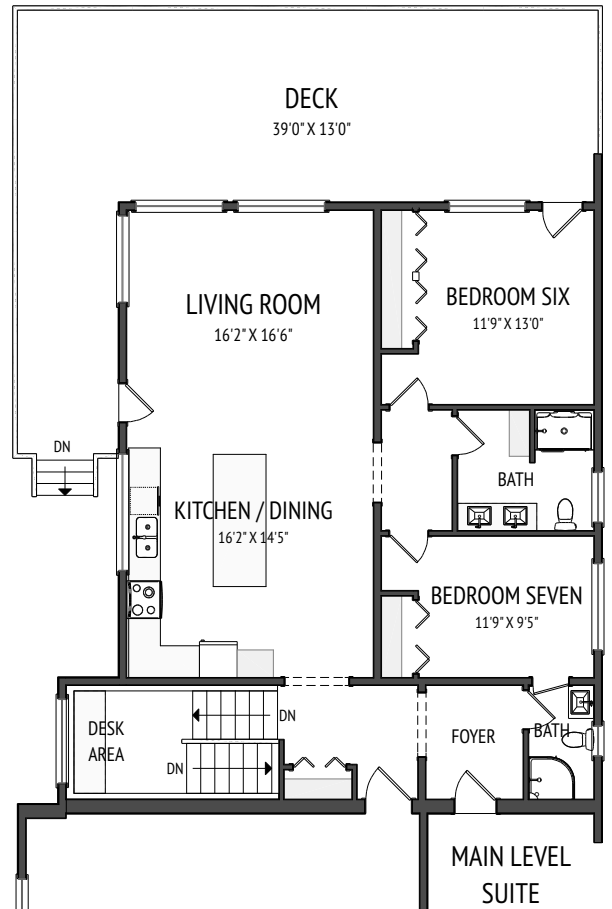
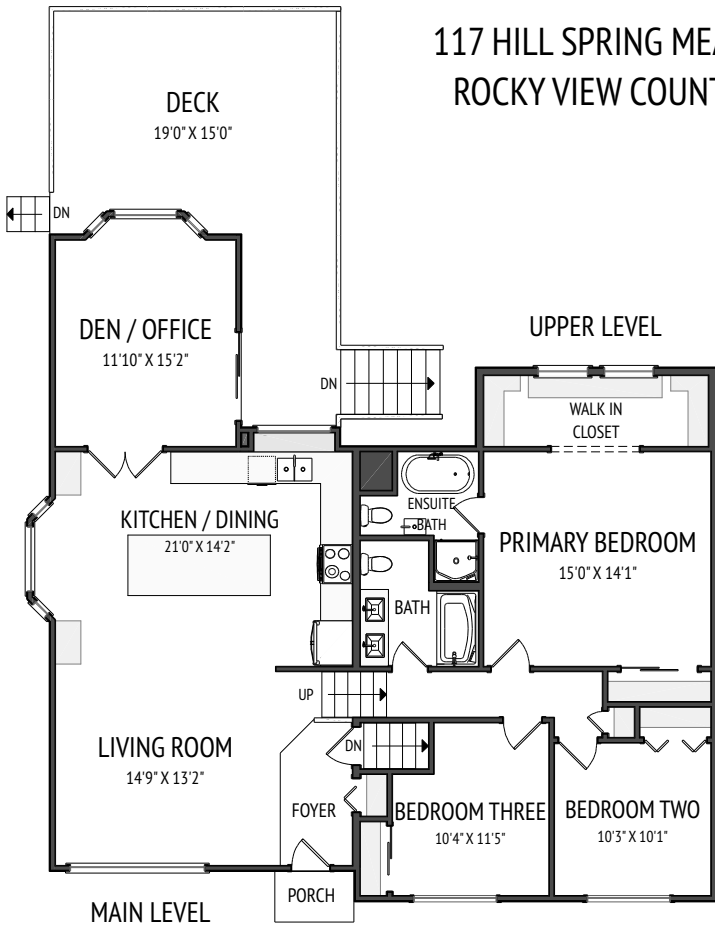
DETACHED SINGLE FAMILY
*RECA RMS MEASUREMENTS TAKEN TO EXTERIOR
FOUNDATION



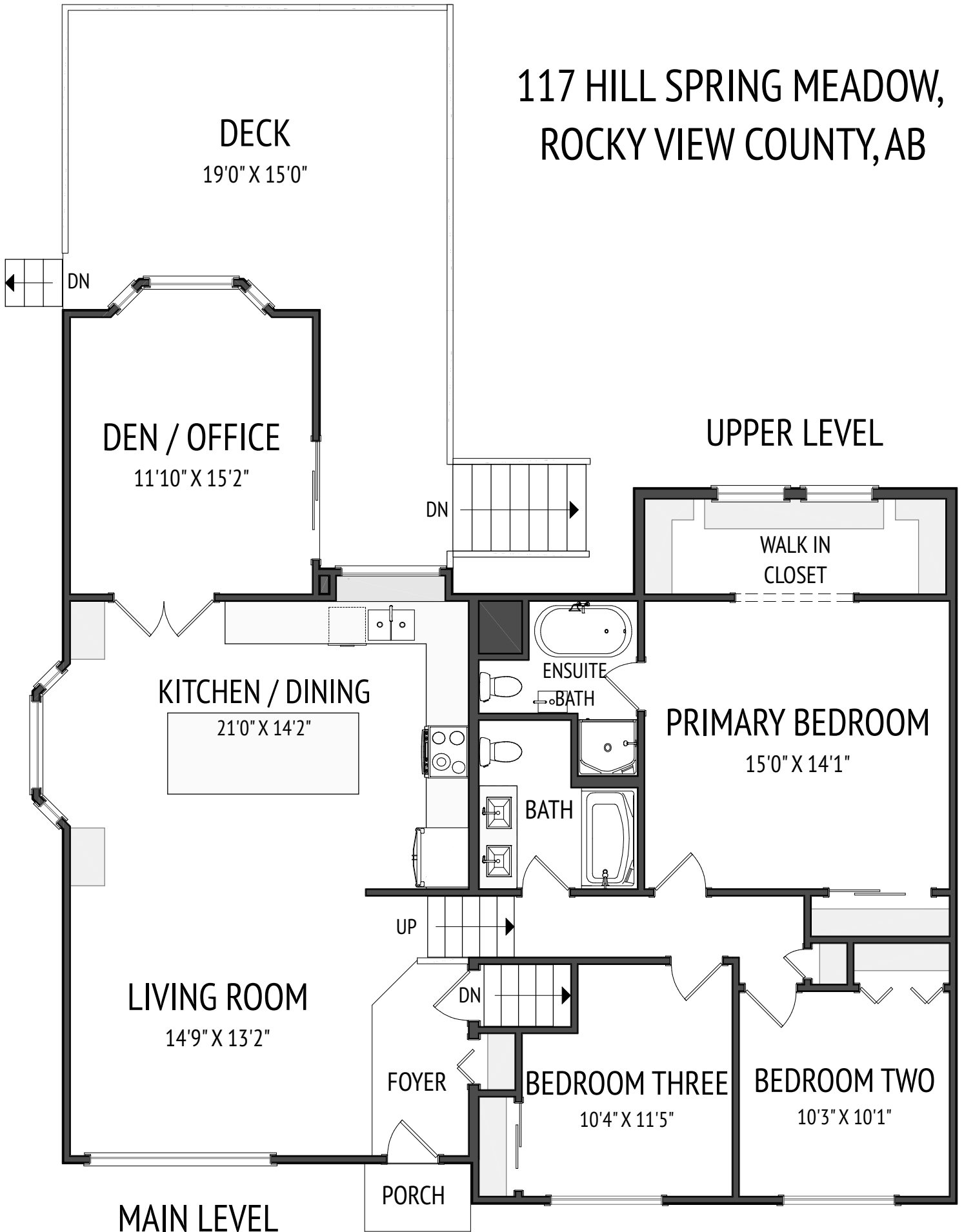
HEATHER YATES
YATES REAL ESTATE
HYATES@TELUS.NET
403.807.0135
JUNE 19, 2024



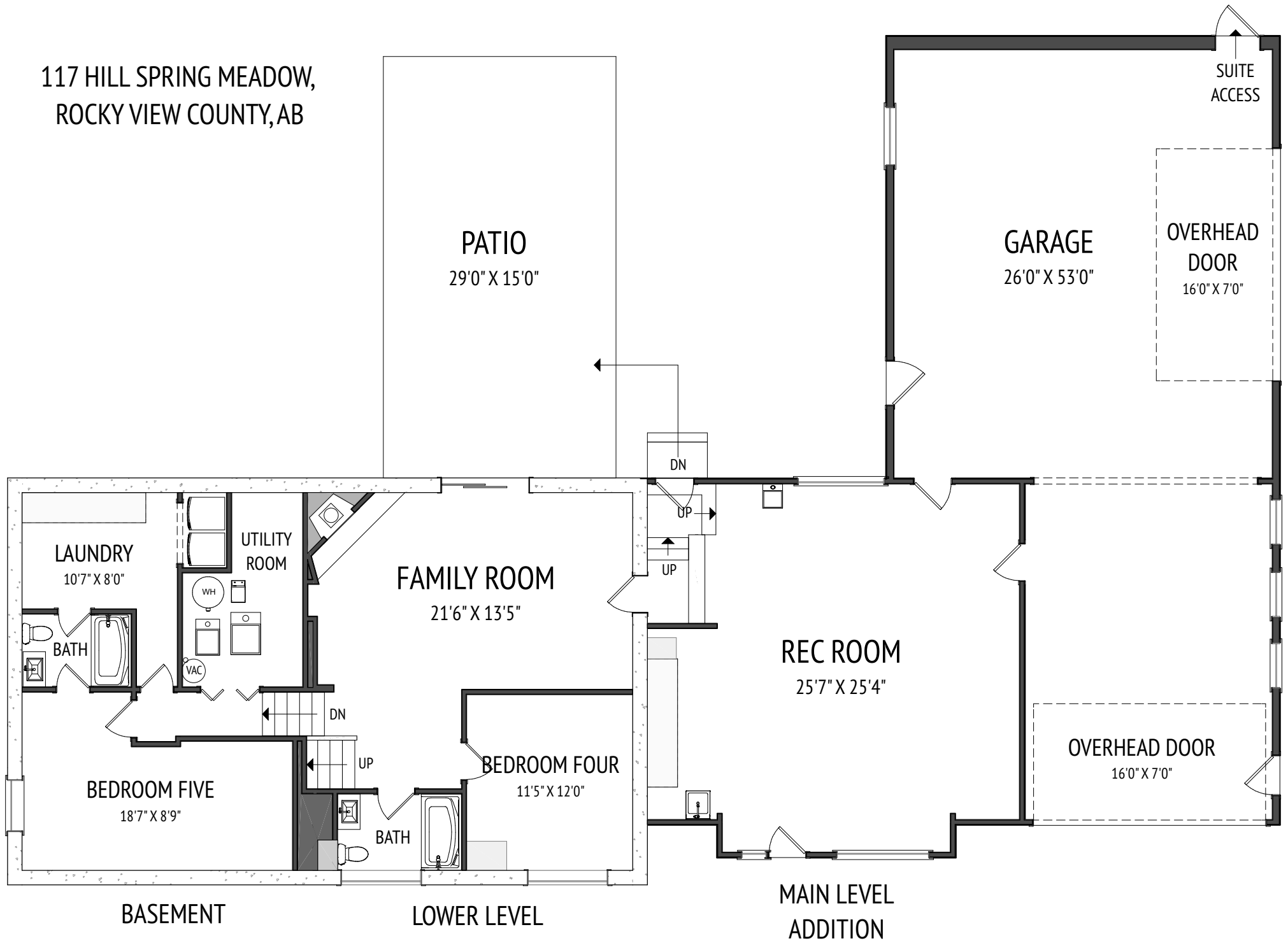
117 HILL SPRING MEADOW,
ROCKY VIEW COUNTY, AB



117 HILL SPRING MEADOW, ROCKY VIEW COUNTY, AB



117 HILL SPRING MEADOW,
ROCKY VIEW COUNTY, AB



PATIO
29'0" X 15'0"

GARAGE
26'0" X 53'0"

OVERHEAD
DOOR
16'0" X 7'0"

SUITE
ACCESS

LAUNDRY
10'7" X 8'0"

UTILITY
ROOM

FAMILY ROOM
21'6" X 13'5"

REC ROOM
25'7" X 25'4"

OVERHEAD DOOR
16'0" X 7'0"

BATH

BEDROOM FIVE
18'7" X 8'9"

DN

UP

BEDROOM FOUR
11'5" X 12'0"

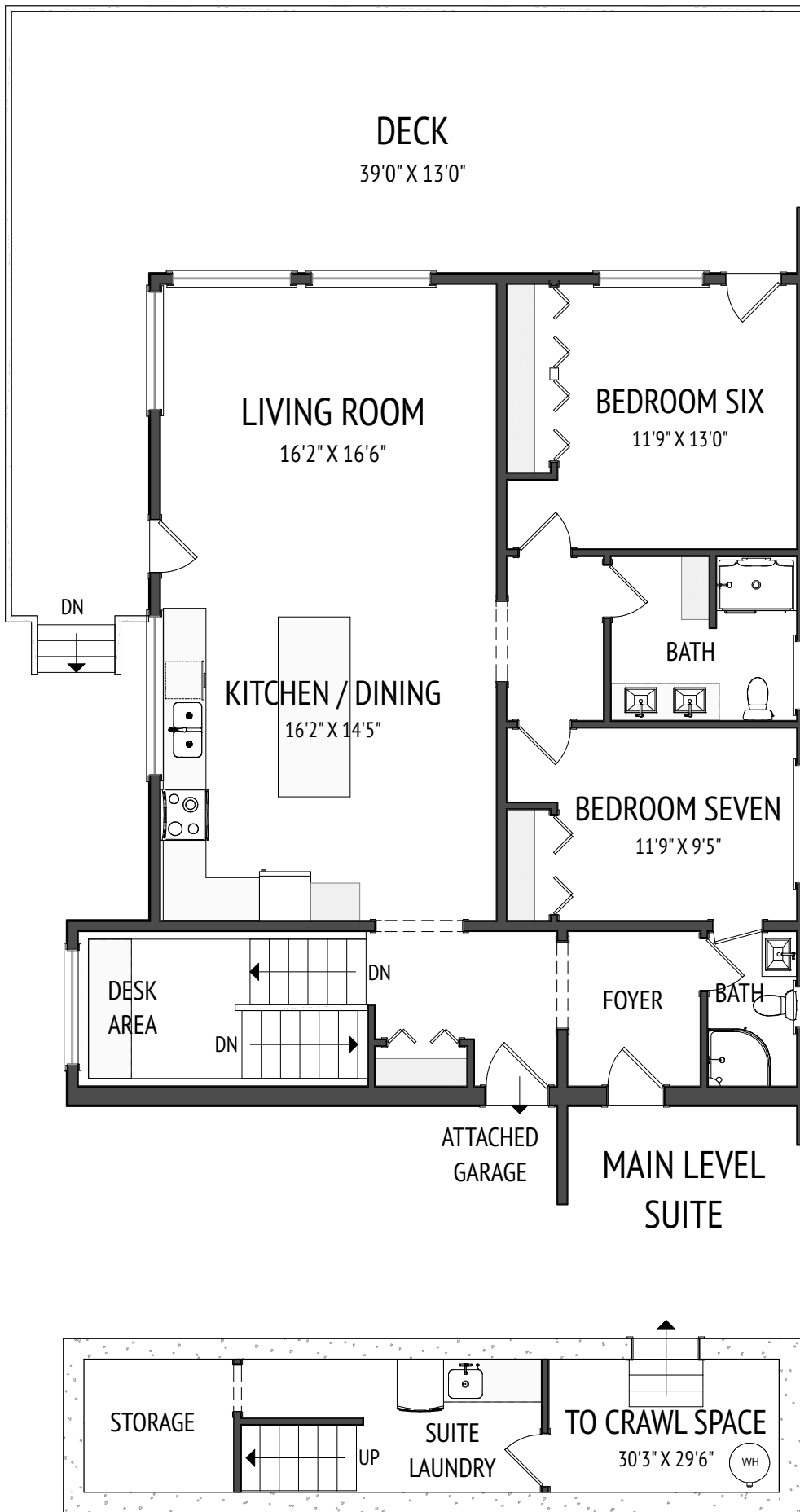
BATH

BASEMENT

LOWER LEVEL

MAIN LEVEL
ADDITION

117 HILL SPRING MEADOW, ROCKY VIEW COUNTY, AB



BASEMENT OF SUITE